

# Orange Slice®

# Artifort®

Pierre Paulin | 1960



## Base:

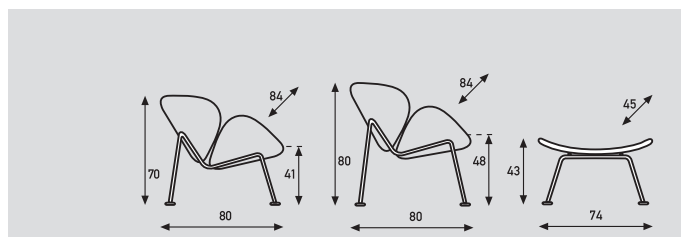
- White steel
- Chromium or powdercoat.
- Black plastic gliders.
- F 437 = relaxed version
- F 437b = active version
- Orange Slice Junior: Maximum burdening 50 kg.

## Seat- and back:

- 2 identical shells of pressed beech.
- Covered with moulded foam.

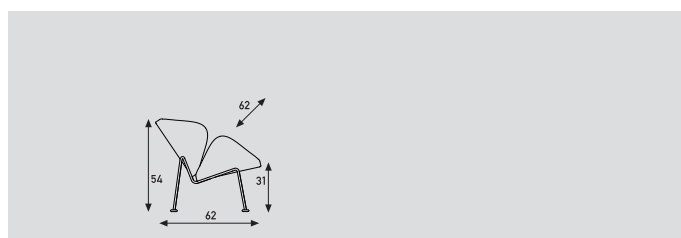
## Upholstery:

- Upholstery category ①②③④⑤



## Orange Slice

<b>models</b>	F 437 chair low	F 437B chair high	P 437 footstool
<b>meterage</b>	245cm	245cm	105cm
<b>weight</b>	21kg	21kg	10kg
<b>packing</b>	0,64m <sup>3</sup>	0,64m <sup>3</sup>	0,25m <sup>3</sup>



## Orange Slice Junior

<b>models</b>	chair
<b>meterage</b>	183cm
<b>weight</b>	8,5kg
<b>packing</b>	0,41m <sup>3</sup>

## Toelichting stoffenlijst

Waarom rekcategorieën? Voor Artifort is het erg belangrijk dat de stoffering van haar zitmeubilair aan haar hoge kwaliteitseisen voldoet. Daarom is niet iedere stof geschikt voor elk model, bijvoorbeeld omdat de stof niet over voldoende rek beschikt om de vormen van het meubel te kunnen volgen. Artifort kent stoffen en meubels daarom rekcategorieën toe. Er zijn er vijf, waarvan categorie 1 tot en met 4 oplopen in rekbaarheid en 5 alleen leer bevat. Leer heeft een aparte categorie omdat het zich anders gedraagt dan stof, het is immers een natuurproduct. Op de prijspagina's ziet u steeds onder de afbeelding welke rekcategorieën toepasbaar zijn op het bewuste meubel.

### Standaardstofcollectie & niet-standaard stoffen

In de prijslijst hebben wij een selectie opgenomen uit de collecties van onze stofleveranciers, onze standaardstofcollectie. Op [www.stoffenkiezer.nl](http://www.stoffenkiezer.nl) vindt u bovendien prijs- en rekinfo van nog een aantal stoffen. Staat de beoogde stof hier niet tussen, neem dan contact op met onze binnendienst. Van veel stoffen buiten onze standaardcollectie is reeds bekend in welke rekategorie deze vallen, mocht dit nog niet het geval zijn dan ontvangen wij graag een staal (50x50cm) zodat wij de rek kunnen beoordelen.

### Verkoop losse stoffen

Artifort werkt samen met diverse stoffabrikanten. Bij aankoop van een Artifort meubel kan indien gewenst extra metrage besteld worden voor het stofferen van een accessoire of een ander meubel in dezelfde stof. Hiervoor wordt € 50,- netto handelingskosten in rekening gebracht. Het is echter niet mogelijk losse stoffen te kopen bij Artifort. Voor losse stoffen verwijzen wij u graag naar de betreffende stofleverancier.

### Meer info stoffen

Voor meer info over de stoffen en kleurvoorbeelden kunt u terecht op [www.stoffenkiezer.nl](http://www.stoffenkiezer.nl), maar uiteraard ook op de eigen websites van onze stofleveranciers:

-	Kvadrat	<a href="http://www.kvadrat.dk">www.kvadrat.dk</a>
-	Gabriel	<a href="http://www.gabriel.dk">www.gabriel.dk</a>
-	Ohmann Leather	<a href="http://www.ohmann.nl">www.ohmann.nl</a>
-	Camira Fabrics	<a href="http://www.camirafabrics.com">www.camirafabrics.com</a>
-	Elmo Leather	<a href="http://www.elmoleather.com/furniture">www.elmoleather.com/furniture</a>
-	De Ploeg	<a href="http://www.deploeg.com">www.deploeg.com</a>
-	Serge Ferrari	<a href="http://www.sergeferrari.com">www.sergeferrari.com</a>
-	Vyva Fabrics	<a href="http://www.vyvafabrics.nl">www.vyvafabrics.nl</a>
-	Rohi	<a href="http://www.rohi.com">www.rohi.com</a>

L Leer.

Ⓜ Sommige stoffen uit stoffecategorie 2 zijn niet geschikt om op modellen uit de Bras-serie toe te passen.  
Indien toch gewenst dan zullen deze producten op bepaalde plekken extreme ploovorming vertonen.

\* Niet mogelijk op Pala en Big Island.

\*\* Niet mogelijk op Big Island.

\*\*\* Niet mogelijk op Ondo.

# Standaard stoffencollectie

volgens prijsklasse

Artifort®

volgens rekategorie

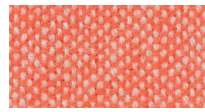
Stof	Fabrikant		Rek		Rek	Stof	Fabrikant		
<b>AA</b>	Artifort Selecte	<i>Artifort Textiles</i>	3		1	* Era	<i>Camira</i>		AA
	Artifort Spektra	<i>Artifort Textiles</i>	2			Phlox	<i>Kvadrat / Raf Simons</i>		FF
	Era	<i>Camira</i>	1	*		Quest	<i>Camira</i>		AA
	Main Line Flax	<i>Camira</i>	2			Re-Wool	<i>Kvadrat</i>		DD
	Main Line Plus	<i>Camira</i>	2			* Step Melange	<i>Gabriel</i>		BB
	Quest	<i>Camira</i>	1			Synergy	<i>Camira</i>		CC
	Xtreme	<i>Camira</i>	2	*					
<b>BB</b>	Artifort Lana	<i>Artifort Textiles</i>	2		2	Artifort Lana	<i>Artifort Textiles</i>		BB
	Blazer	<i>Camira</i>	2			Artifort Spektra	<i>Artifort Textiles</i>		AA
	Boltaflex	<i>Vyva</i>	2	**	**	Blazer	<i>Camira</i>		BB
	Fame	<i>Gabriel</i>	2	*		Boltaflex	<i>Vyva</i>		BB
	Remix	<i>Kvadrat</i>	2			Divina	<i>Kvadrat</i>		DD
	Silverguard	<i>Vyva</i>	2	**	*	Divina Melange	<i>Kvadrat</i>		DD
	Stamskin Top	<i>Serge Ferrari</i>	2			* Fame	<i>Gabriel</i>		BB
	Step Melange	<i>Gabriel</i>	1	*		Fezwool	<i>De Ploeg</i>		DD
	Tonus	<i>Kvadrat</i>	3			Fiord	<i>Kvadrat</i>		EE
<b>CC</b>	Haku	<i>Kvadrat</i>	2			Haku	<i>Kvadrat</i>		CC
	Hallingdal 65	<i>Kvadrat</i>	2			Hallingdal 65	<i>Kvadrat</i>		CC
	Monza	<i>De Ploeg</i>	2			Main Line Flax	<i>Camira</i>		AA
	Synergy	<i>Camira</i>	1			Main Line Plus	<i>Camira</i>		AA
<b>DD</b>	Divina	<i>Kvadrat</i>	2			Monza	<i>De Ploeg</i>		CC
	Divina Melange	<i>Kvadrat</i>	2			Moss	<i>Kvadrat Sahco</i>		DD
	Fezwool	<i>De Ploeg</i>	2			Ploegwool	<i>De Ploeg</i>		DD
	Moss	<i>Kvadrat Sahco</i>	2			Remix	<i>Kvadrat</i>		BB
	Planum	<i>Kvadrat Febrik</i>	3			Sera	<i>Rohi</i>		DD
	Ploegwool	<i>De Ploeg</i>	2		**	Silverguard	<i>Vyva</i>		BB
	Re-Wool	<i>Kvadrat</i>	1			Stamskin Top	<i>Serge Ferrari</i>		BB
	Sera	<i>Rohi</i>	2			Steelcut	<i>Kvadrat</i>		DD
	Steelcut	<i>Kvadrat</i>	2			Steelcut Trio	<i>Kvadrat</i>		DD
	Steelcut Trio	<i>Kvadrat</i>	2			Tonica	<i>Kvadrat</i>		DD
	Tonica	<i>Kvadrat</i>	2		*	Twill Weave	<i>Kvadrat</i>		FF
	Twinwool	<i>De Ploeg</i>	3			* Xtreme	<i>Camira</i>		AA
	Uniform Melange	<i>Kvadrat Febrik</i>	3			Zero	<i>Kvadrat Sahco</i>		DD
	Zero	<i>Kvadrat Sahco</i>	2						
<b>EE</b>	Artifort Ox	<i>Artifort Textiles</i>	5	L	3	Artifort Selecte	<i>Artifort Textiles</i>		AA
	Fiord	<i>Kvadrat</i>	2			Planum	<i>Kvadrat Febrik</i>		DD
	Mizmaze	<i>Kvadrat Febrik</i>	4			Tonus	<i>Kvadrat</i>		BB
	Mosaic	<i>Kvadrat Febrik</i>	4			Twinwool	<i>De Ploeg</i>		DD
<b>FF</b>	Ohmann 1012	<i>Ohmann</i>	5	L		Uniform Melange	<i>Kvadrat Febrik</i>		DD
	Phlox	<i>Kvadrat / Raf Simons</i>	1		4	*** Gentle	<i>Kvadrat Febrik</i>		GG
	Twill Weave	<i>Kvadrat</i>	2			Mizmaze	<i>Kvadrat Febrik</i>		EE
<b>GG</b>	Gentle	<i>Kvadrat Febrik</i>	4	***		Mosaic	<i>Kvadrat Febrik</i>		EE
<b>HH</b>	Elmosoft	<i>Elmo</i>	5	L	5	L Artifort Ox	<i>Artifort Textiles</i>	m2	EE
	Ohmann Misto	<i>Ohmann</i>	5	L		L Elmosoft	<i>Elmo</i>	m2	HH
						L Ohmann 1012	<i>Ohmann</i>	m2	FF
						L Ohmann Misto	<i>Ohmann</i>	m2	HH

## Artifort Textiles | Fabrics

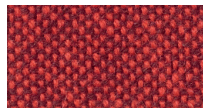
### Artifort Selecte

90% Wool / 10% Helanca  
100.000 Martindale

Price category **AA**  
Stretch category **3**



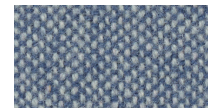
**Artifort Selecte** | 520  
Salmon



**Artifort Selecte** | 580  
Sweet Red



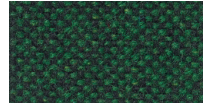
**Artifort Selecte** | 680  
Burgundy



**Artifort Selecte** | 720  
Denim Blue



**Artifort Selecte** | 820  
Sky Blue



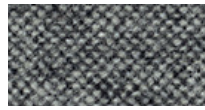
**Artifort Selecte** | 980  
Deep Green



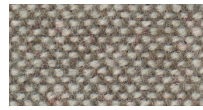
**Artifort Selecte** | 760  
Azure Blue



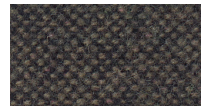
**Artifort Selecte** | 780  
Deep Blue



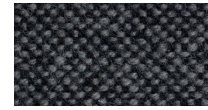
**Artifort Selecte** | 260  
Tweed Grey



**Artifort Selecte** | 220  
Taupe



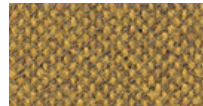
**Artifort Selecte** | 280  
Chocolate



**Artifort Selecte** | 180  
Charcoal



**Artifort Selecte** | 130  
Light Grey



**Artifort Selecte** | 480  
Mustard Yellow

### Artifort Spektra

100% Trevira CS  
>50.000 Martindale

Price category **AA**  
Stretch category **2**



**Artifort Spektra** | 4  
Ecu



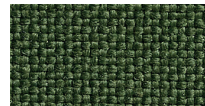
**Artifort Spektra** | 7  
Truffle



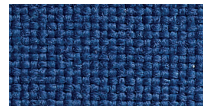
**Artifort Spektra** | 11  
True Red



**Artifort Spektra** | 14  
Pumpkin



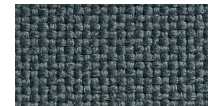
**Artifort Spektra** | 21  
Forest



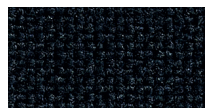
**Artifort Spektra** | 28  
Royal Blue



**Artifort Spektra** | 32  
Soft Pink



**Artifort Spektra** | 36  
Stone



**Artifort Spektra** | 37  
Black

## Artifort Textiles | Fabrics

### Artifort Lana

70% Wool / 30% Polyamide  
180.000 Martindale

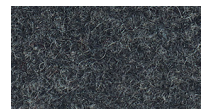
Price category **BB**  
Stretch category **2**



**Artifort Lana** | 511  
Light grey



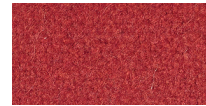
**Artifort Lana** | 513  
Grey



**Artifort Lana** | 516  
Black Grey



**Artifort Lana** | 541  
Pink



**Artifort Lana** | 532  
Passion



**Artifort Lana** | 525  
Sand



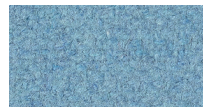
**Artifort Lana** | 561  
Sunny Yellow



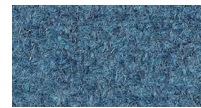
**Artifort Lana** | 572  
Mint



**Artifort Lana** | 573  
Soft Turquoise



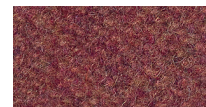
**Artifort Lana** | 582  
Light Blue



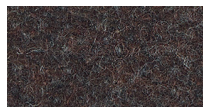
**Artifort Lana** | 584  
Jeans



**Artifort Lana** | 550  
Orange



**Artifort Lana** | 592  
Ruby



**Artifort Lana** | 529  
Chocolate



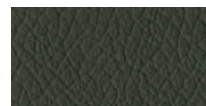
**Artifort Lana** | 585  
Navy Blue

## Artifort Textiles | Leather

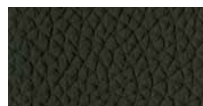
### Artifort Ox

Aniline leather  
50.000 Martindale

Price category **EE**  
Stretch category **5**



**Artifort Ox** | 5290  
Elephant



**Artifort Ox** | 5310  
Storm



**Artifort Ox** | 5431  
Atlantic



**Artifort Ox** | 5300  
Black



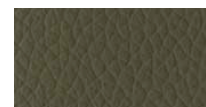
**Artifort Ox** | 5000  
Pure White



**Artifort Ox** | 5518  
Warm White



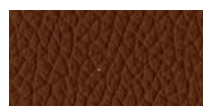
**Artifort Ox** | 5320  
Sahara



**Artifort Ox** | 5522  
Stone



**Artifort Ox** | 5200  
Passion



**Artifort Ox** | 5100  
Hazelnut



**Artifort Ox** | 5080  
Cognac



**Artifort Ox** | 5110  
Camel

with piping










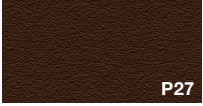




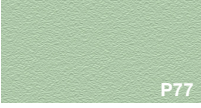

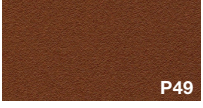







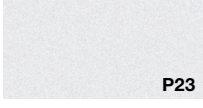
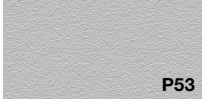

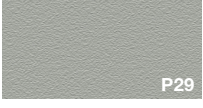
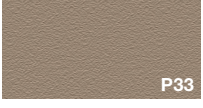

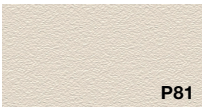
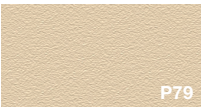
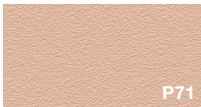
Artifort | colour and material library

### Other fabrics

This colour and material library only includes upholstery with the Artifort Textiles. The Artifort Textiles are part of the standard fabric collection. Have a look at [www.stoffenkiezer.nl/artifort](http://www.stoffenkiezer.nl/artifort) to discover the collections from our other suppliers such as Kvadrat, De Ploeg, Gabriel, Ohmann and many more.

## Finishes metal parts | powder coat (P)

### Textured powder coat colours (matte effect)

 P39	 P85	 P11	 P55	 P57	 P10
<b>Grey blue</b> RAL 5008	<b>Slate grey</b> RAL 7015	<b>Grey</b>	<b>Quartz grey</b> RAL 7039	<b>Black grey</b> RAL 7021	<b>Black</b> RAL 9005
 P43	 P25	 P67	 P27	 P69	 P35
<b>Ocean blue</b> RAL 5020	<b>Black brown</b> RAL 8022	<b>Chocolate brown</b> RAL 8017	<b>Sepia brown</b> RAL 8014	<b>Orange brown</b> RAL design 050 30 36	<b>Honey yellow</b> RAL 1005
 P73	 P75	 P77	 P41	 P49	 P61
<b>Dark blue</b> RAL 5003	<b>Pine green</b> RAL 6028	<b>Pastel green</b> RAL 6019	<b>Black red</b> RAL 3007	<b>Copper</b> MW305F	<b>Light pink</b> RAL 3015
 P59	 P37	 P83	 P65	 P63	 P87
<b>Azure blue</b> RAL 5009	<b>Fir green</b> RAL 6009	<b>Pastel turquoise</b> RAL 6034	<b>Purple red</b> RAL 3004	<b>Traffic orange</b> RAL 2009	<b>Salmon orange</b> RAL 2012
 P23	 P53	 P13	 P29	 P33	 P31
<b>White</b> RAL 9016	<b>Tele grey 4</b> RAL 7047	<b>Aluminum metallic</b> RAL 9006	<b>Agate grey</b> RAL 7038	<b>Grey beige</b> RAL 1019	<b>Olive grey</b> RAL 7002
 P81	 P79	 P71			
<b>Cream white</b> RAL 9001	<b>Light ivory</b> RAL 1015	<b>Pink beige</b> RAL design 060 80 20			

### Overview smooth powder coat colours (glossy effect)

 P42	 P06	 P03	 P24	 P26
<b>Ocean blue</b> RAL 5020	<b>Dark grey metallic</b>	<b>Black</b> RAL 9005	<b>Black brown</b> RAL 8022	<b>Sepia brown</b> RAL 8014
 P36	 P05	 P04	 P38	 P40
<b>Capri blue</b> RAL 5019	<b>Signal white</b> RAL 9003	<b>White</b> RAL 9010	<b>Red orange</b> RAL 2001	<b>Traffic red</b> RAL 3020
 P08	 P28	 P32	 P30	 P34
<b>Aluminum metallic</b> RAL 9006	<b>Agate grey</b> RAL 7038	<b>Grey beige</b> RAL 1019	<b>Olive grey</b> RAL 7002	<b>Honey yellow</b> RAL 1005

When applying lacquer on wood combined with powder-coated metal in the same colour (for example Extens and Palladio), slight colour deviations are inevitable due to the application of different finishes on different surfaces.